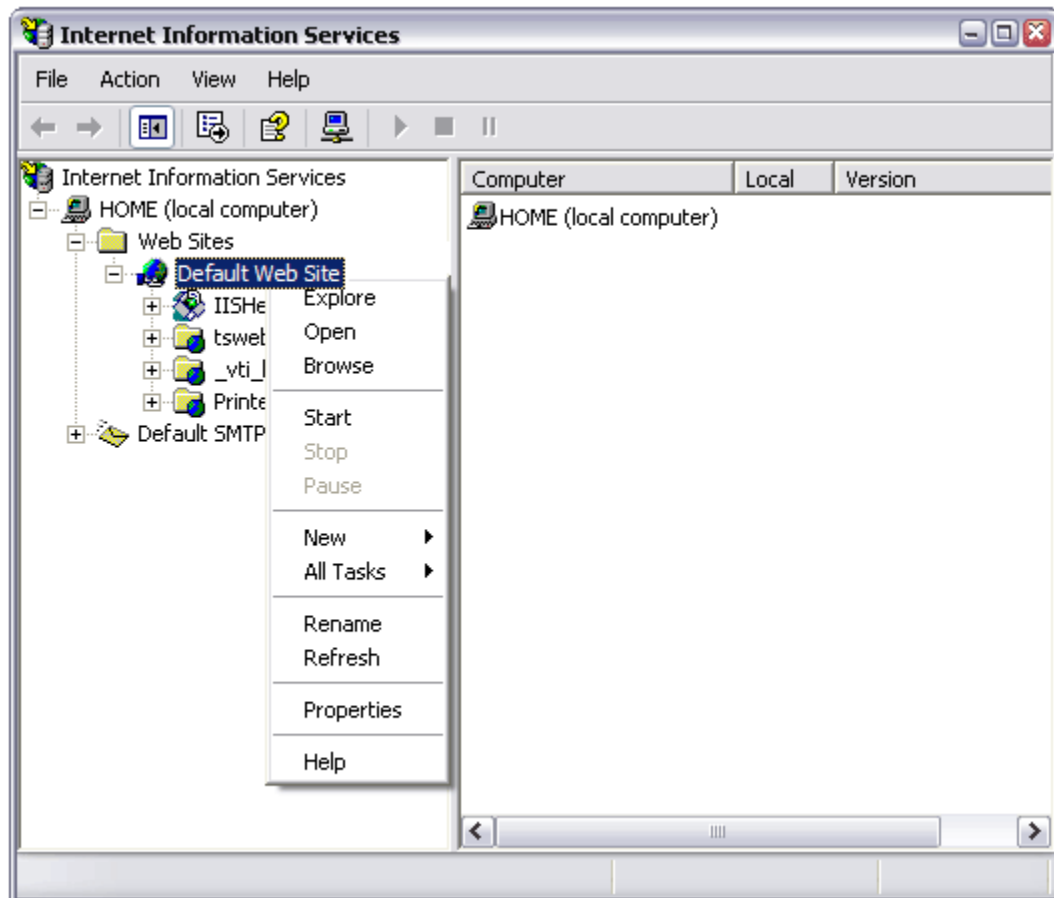
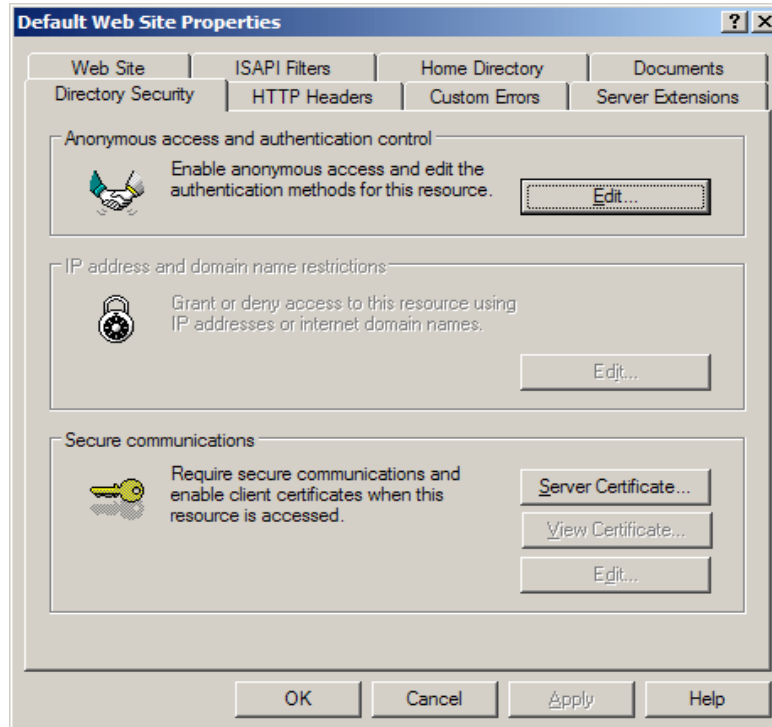


SSL Installation Microsoft IIS 5.0/6.0

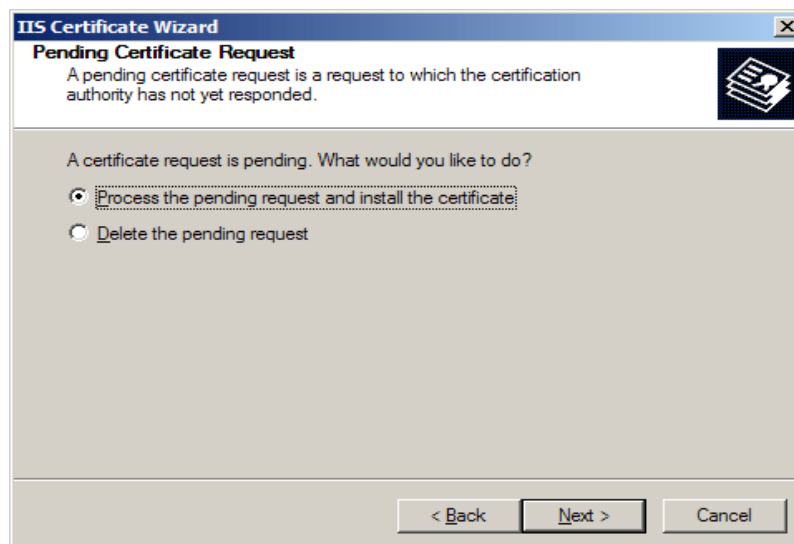
1. Copy your certificate that you received it on your e-mail and save it on text file as (SSL.txt)
2. Go to your Administrative Tools, and Open the Internet Services Manager. Right-Click on the Default Website or the website that the CSR was created on and select Properties. The certificate will only be able to be installed on the same website that you created the CSR on.



3. Go to the Directory Security panel. Click on the "Server Certificate..." button. This will start the certificate wizard. Click "Next".



4. Choose to Process the pending request and install the certificate and click Next



5. Browse" for your SSL Certificate. Locate SSL.txt, then Click Next.