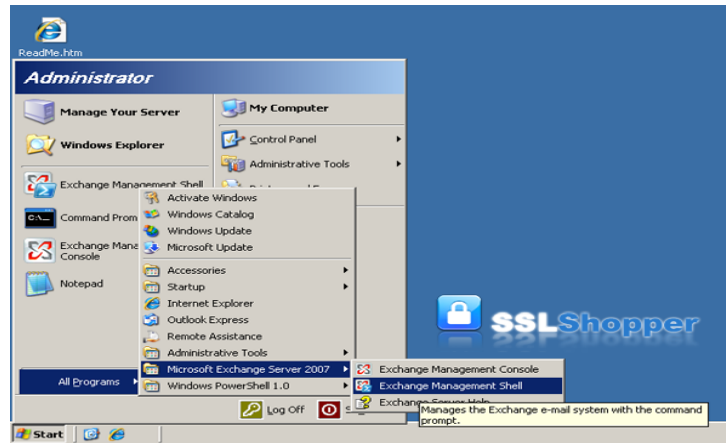


Generate CSR from Microsoft Exchange 2007:

1. Click Start > Programs > Microsoft Exchange Server 2007 > Exchange Management Shell



2. `New-ExchangeCertificate -domainname mail.google.com, google.com, google.local, autodiscover.google.com, server01.google.com, server01 -Friendlyname google.com -generaterequest:$true -keysize 2048 -path c:\certrequest.txt -privatekeyexportable:$true -subjectname "c=US, o=Google Inc., cn=server01.google.com, s=California, l=Mountain View, ou=IT"`

```
Machine: WS03R2EEEXCHLCS | Scope: contoso.com
Get help for a cmdlet:      help <cmdlet-name> or <cmdlet-name> -?
Show quick reference guide: quickref
Exchange team blog:       get-exblog
Show full output for a cmd: <cmd> | format-list

Tip of the day #16:
To display the list of UM IP gateway server names that are disabled for outbound calling and hunt groups that are associated with a UM IP gateway server, use:
Get-UmIpGateway | ForEach <If<$_.OutCallsAllowed -Eq $False>< "Gateway Name = " + $_.Name;ForEach <$HuntGroup In $_.Huntgroups><"Huntgroups " + $Huntgroup>>>

[PS] C:\Documents and Settings\Administrator>New-ExchangeCertificate -domainname mail.google.com, google.com, google.local, autodiscover.google.com, server01.google.com, server01 -Friendlyname google.com -generaterequest:$true -keysize 2048 -path c:\certrequest.txt -privatekeyexportable:$true -subjectname "c=US o=Google Inc., CN=server01.google.com"

Thumbprint                               Services      Subject
-----
0A354CF8460414BC27B0B936128DB5BEB65F1A97 .....      CN=server01.google.com, ...

[PS] C:\Documents and Settings\Administrator>
```