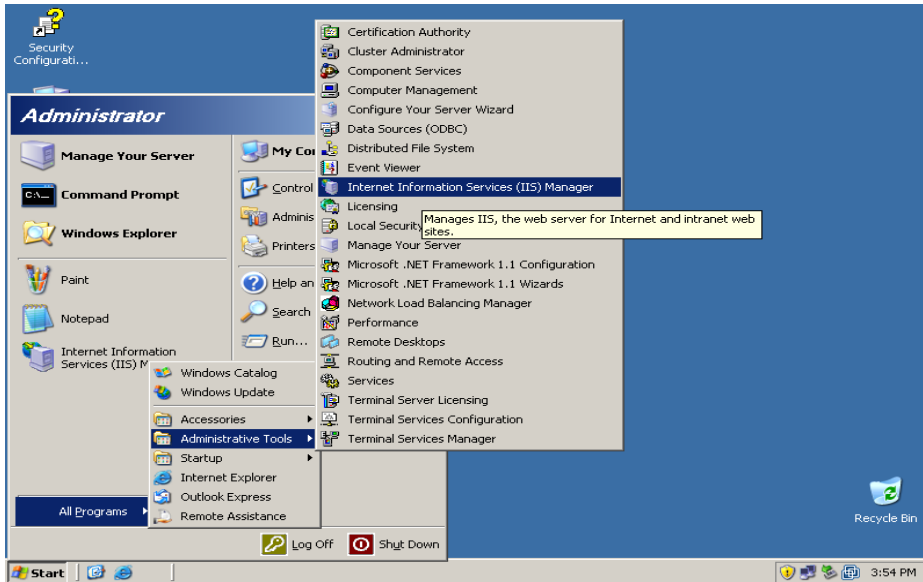
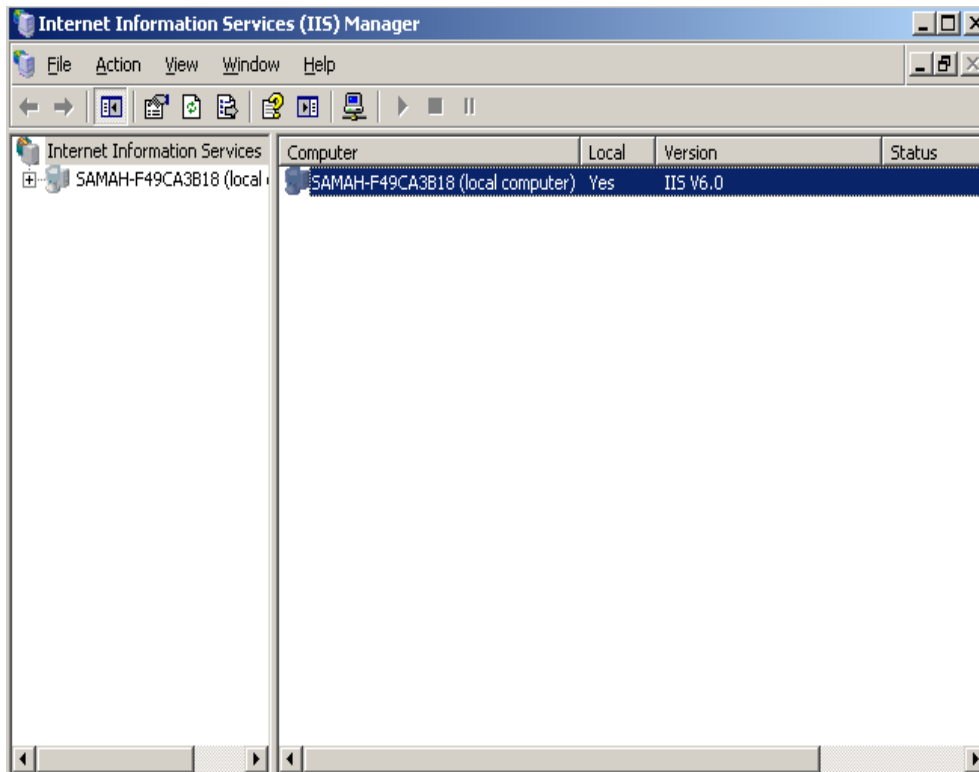


Generate CSR - Microsoft IIS 5.0/6.0:

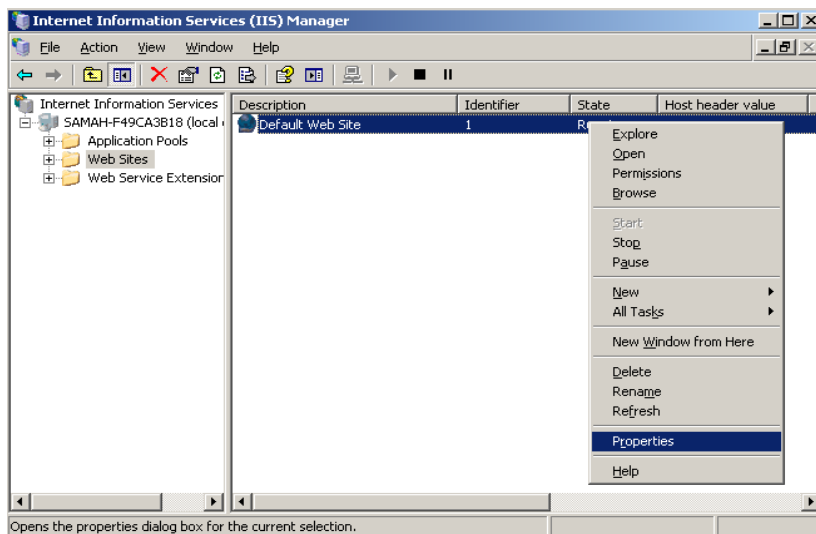
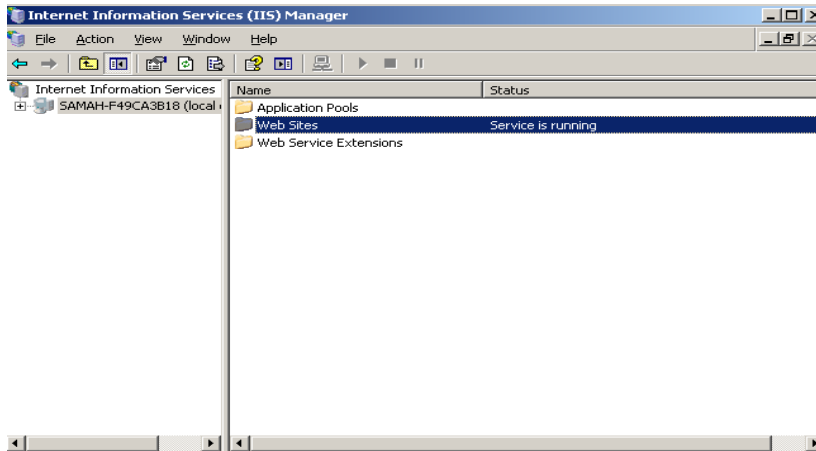
1. Click **Start > All Programs > Administrative Tools > Internet Services Manager (IIS) Manager**

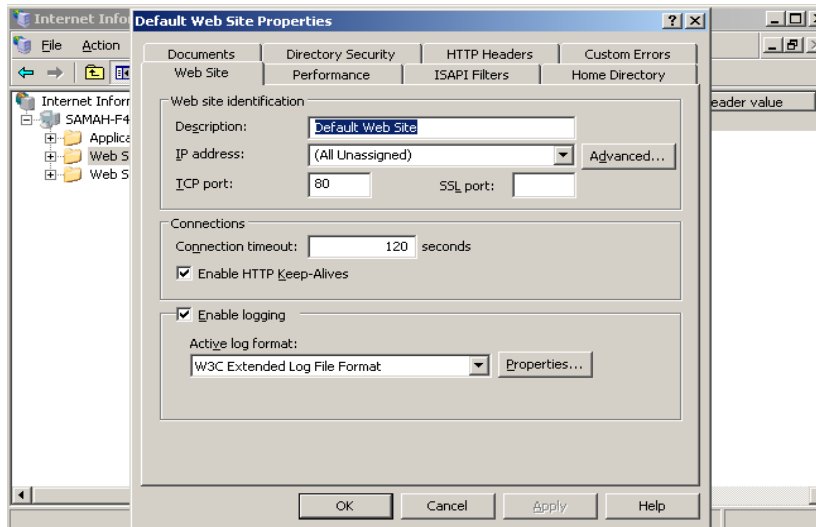


2. Double-click the Server Name > Web Sites folder



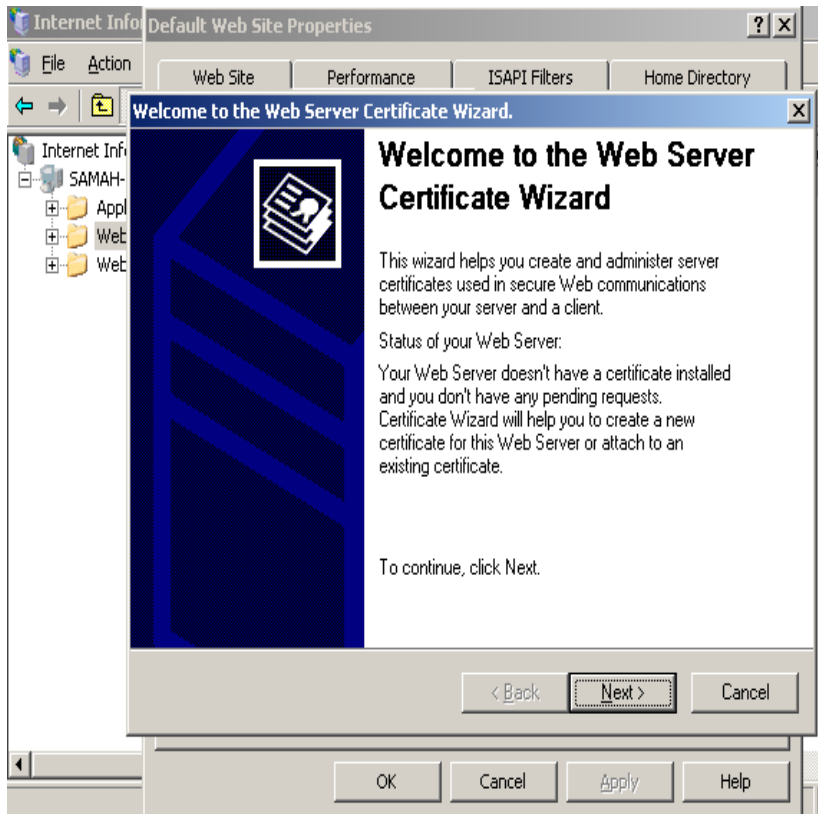
3. Under Web Sites, right-click the corresponding Web site you wish to secure, and select **Properties**



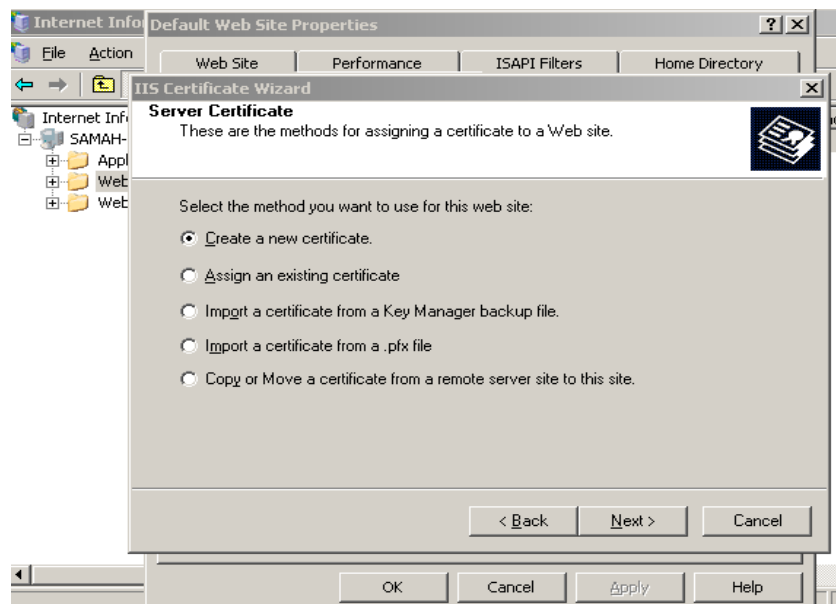


4. Click **Directory Security** tab
5. Under Secure communications, click **Server Certificate**

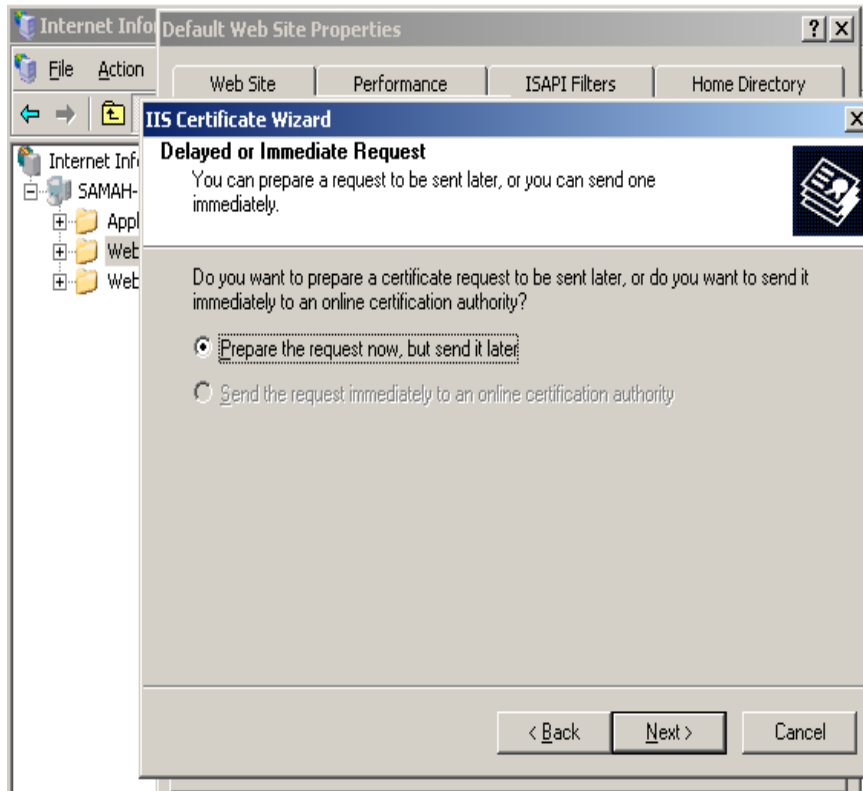




6. Select Create a new certificate

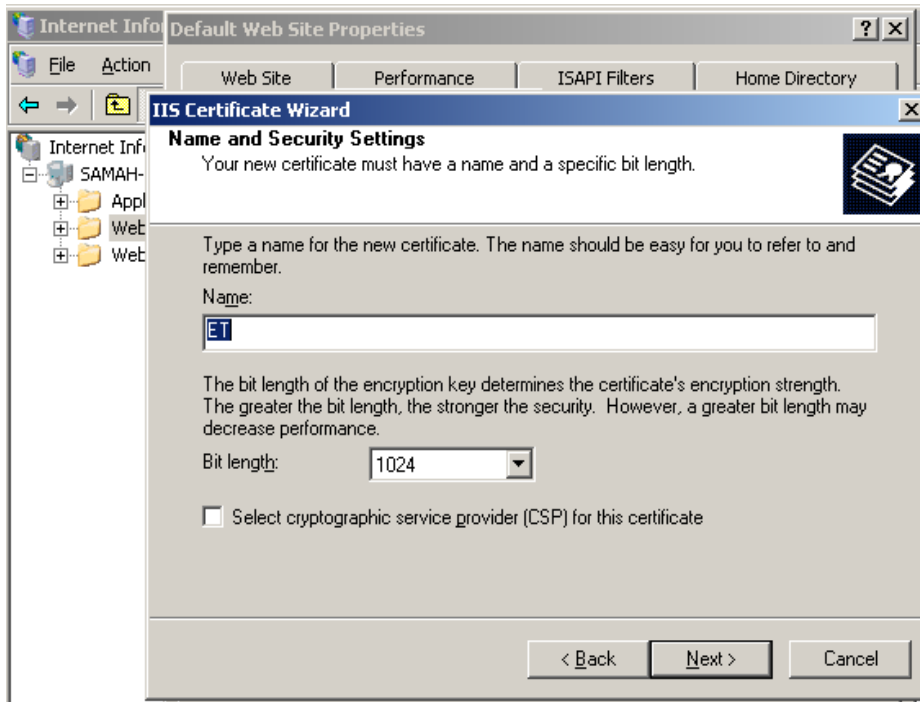


7. Select **Prepare the request now, but send it later**

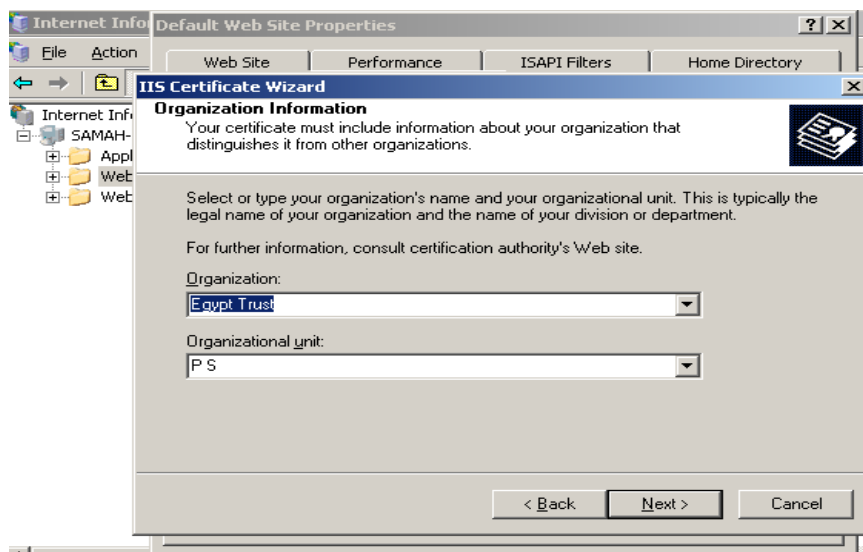


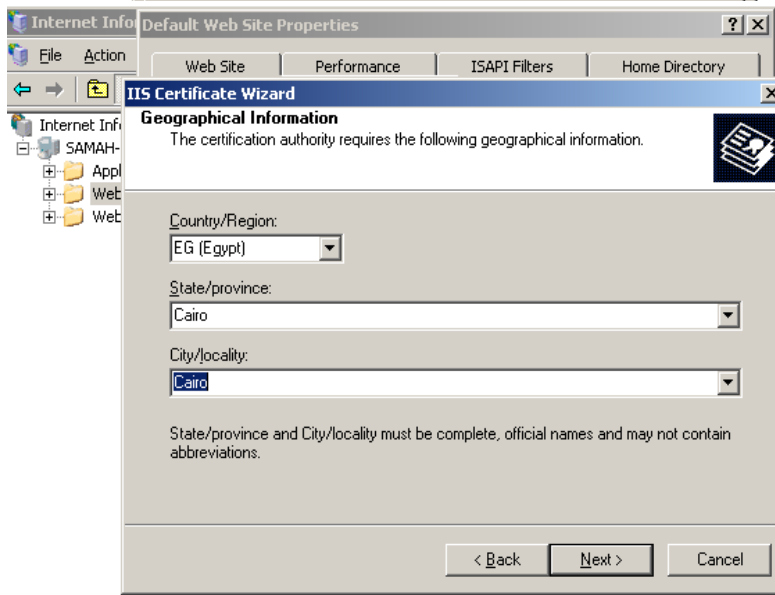
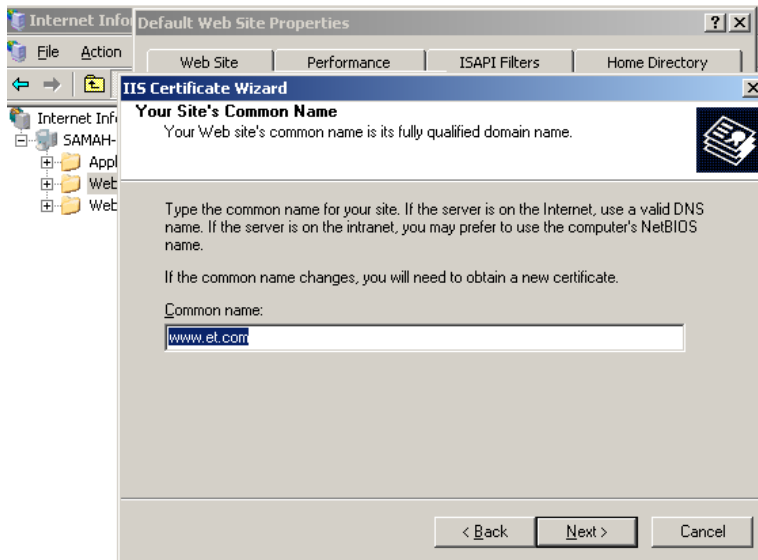
8. Enter a name for the certificate. Please note that this is not the Common Name of the certificate request
9. Select a bit length for the certificate (**1024** or **2048** for EV certificates and the certificates that will expire after October, 2013)

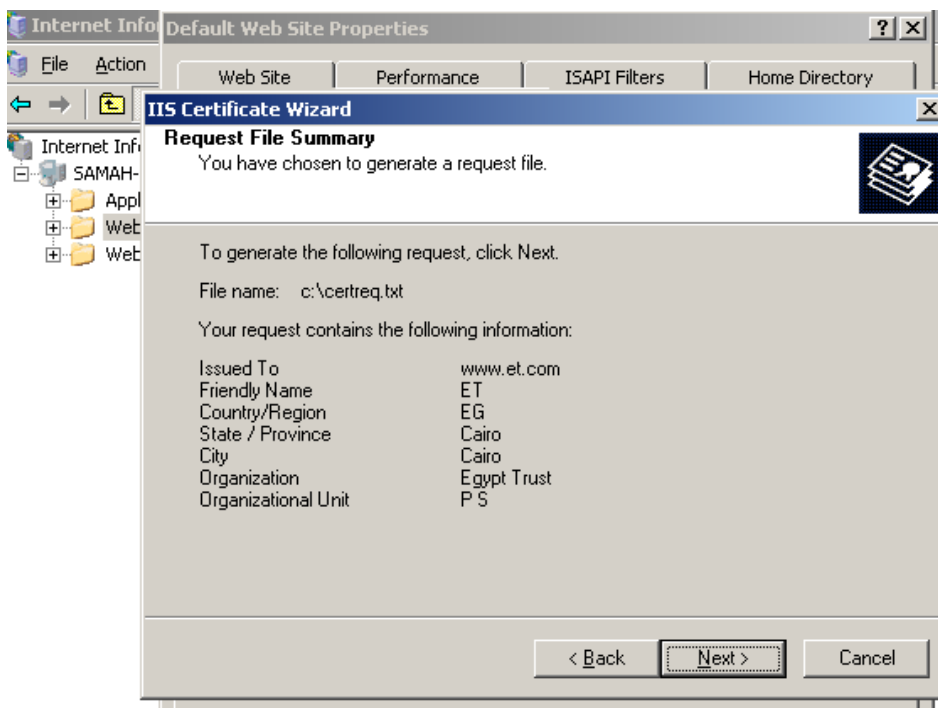
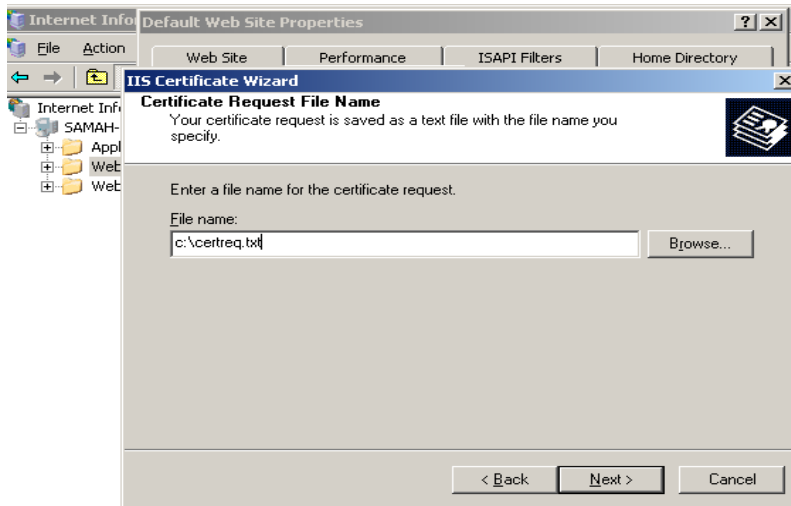
Note: Do not check the box for **Select cryptographic service provider (CSP) for this certificate**



10. Complete the information requested by the IIS Certificate Wizard to create a private key that is stored locally on your server and a Certificate Signing Request that you will use during the enrollment process. The Wizard will prompt for the following X.509 attributes of the certificate







Click **Finish** to exit the IIS Certificate Wizard. A CSR file has been generated

